

DisCo

2ⁱⁿ1 system

DISPOSABLE & CONVENTIONAL CHROMATOGRAPHY IN ONE SYSTEM

The ONLY System that allows you the FREEDOM to choose
Single-use or Conventional Chromatography as and when your need arises



LISURE

DisCo

2in1 system

DISPOSABLE & CONVENTIONAL CHROMATOGRAPHY IN ONE SYSTEM

The ONLY System that allows you the FREEDOM to choose
Single-use or Conventional Chromatography as and when your need arises



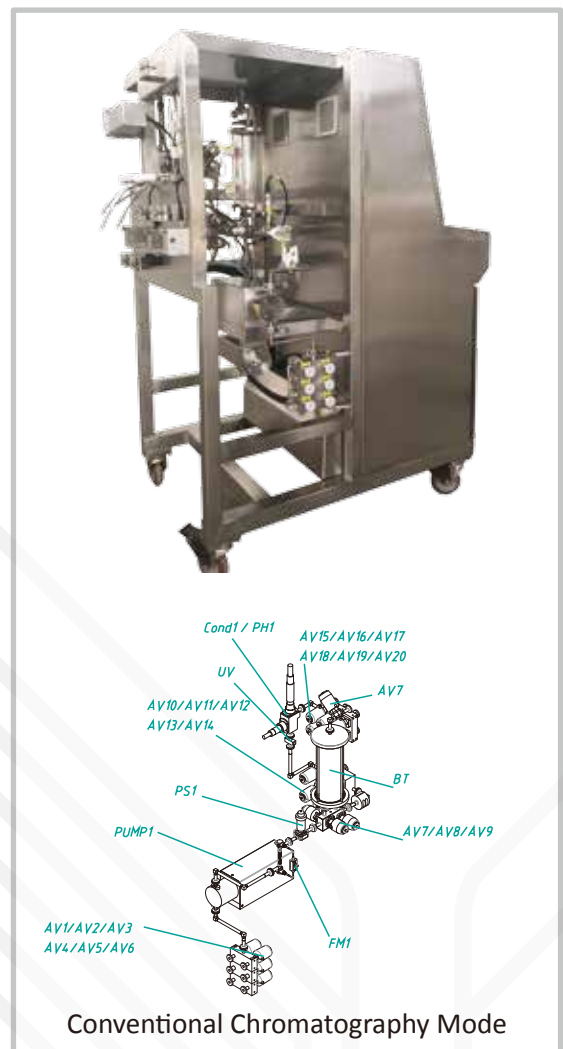
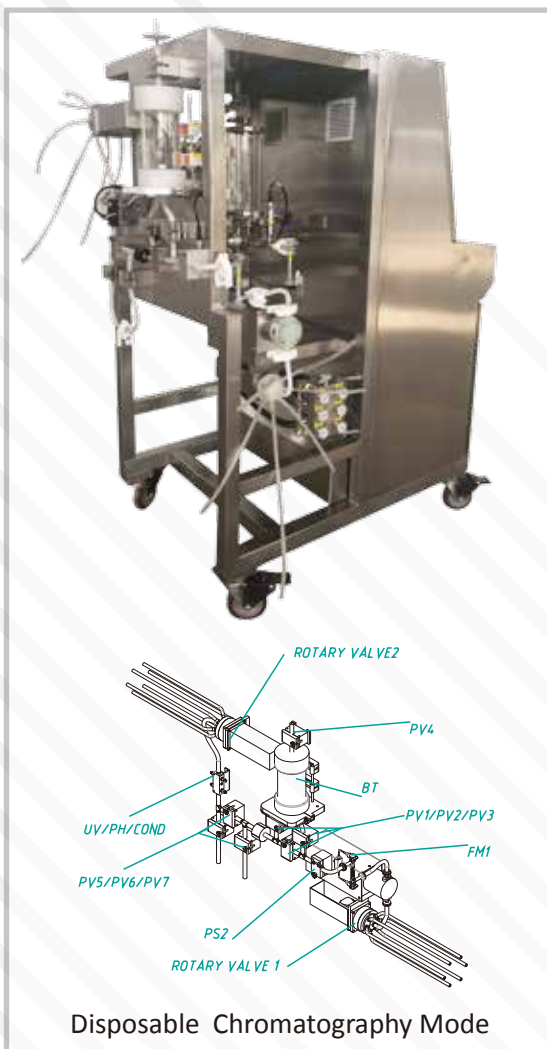
UNCERTAINabout how many projects and how many batches per project

UNCERTAINto invest in Disposable or Conventional Chromatography System

Our SOLUTION..... **DisCo**
2in1 system

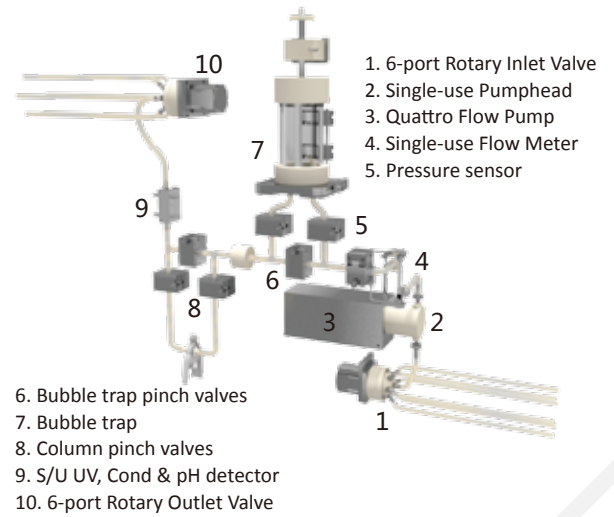
Combining Disposable and Conventional Chromatography in One System

- Freedom to choose - between Disposable or Conventional Chromatography Mode
- Quick and convenient switch between Single-use Flow Path and Stainless Steel Flow Path within minutes
- Affordable, economical and flexible solution
- Meets regulatory cGMP requirements and USP Class VI for wetted parts



Single-use Flow Path

- Premium quality, reliable and affordable
- Quick and easy assembly within minutes
- Unique disposable 6-port rotary valves
- All wetted parts comply to USP Class VI and full traceability
- Flow path is produced in a hygienic controlled environment and packed in a Class 10000 clean room
- Entire flow path is gamma irradiated



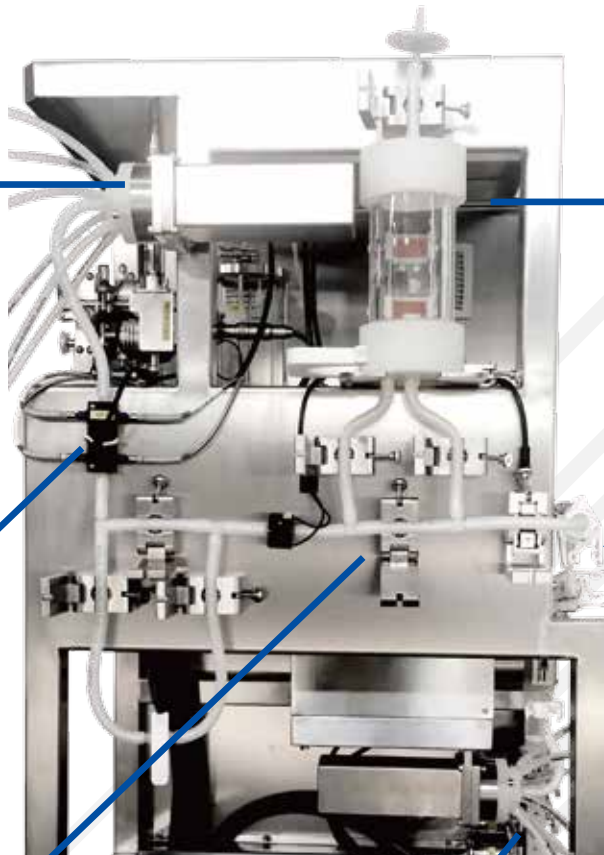
Unique Single-use
Precision 6-Port Rotary Valve



Single-use Flow Cell
with UV, pH and Conductivity Sensors



Single-use Flow Path
with Air Sensor, Pinch Valves and Pressure Sensor



Single-use Bubble Trap



Single-use Pump Head
and 6-Port Rotary Valve

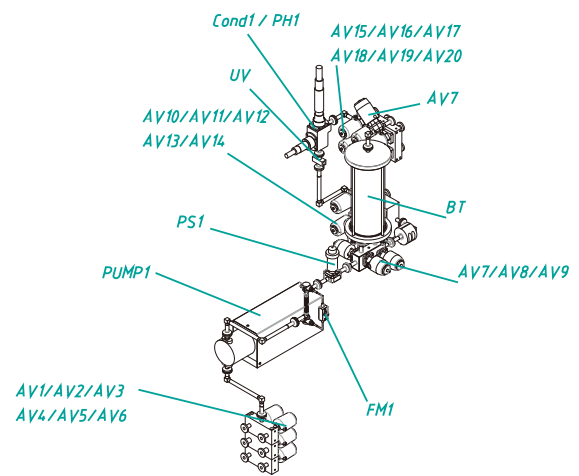


Single-use Flow Meter



- | | |
|-----------------------|-------------------------|
| 1. Inlet Valves | 7. Bubble Trap |
| 2. S/S Pumphead | 8. Column Valves |
| 3. Quattro Flow Pump | 9. UV monitor |
| 4. Flow Meter | 10. pH & Conductivity |
| 5. Pressure Sensor | 11. Outlet Block Valves |
| 6. Bubble Trap Valves | |

Switching from single-use flow path to stainless flow path is quick and easy, within minutes, by removing the single-use pump head and fitting on a stainless steel pumphead and connecting it with stainless steel tubings to the preinstalled inlet block valves and flow meter. The stainless steel 316L flow path is already pre-installed with pressure sensor, bubble trap, bypass valves, air sensor, UV, pH and conductivity monitoring and outlet block valves



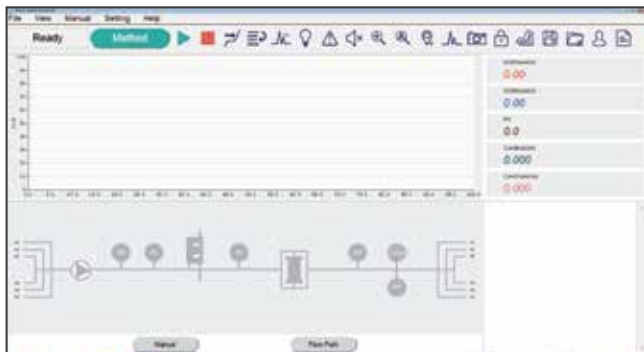
DisCo System is an innovative 2in1 chromatography system, combining disposable single-use and conventional stainless steel flow paths in one system. It is produced at our new 20000 sqm state-of-the-art production facility in Suzhou Industrial Park, in accordance with our quality system which is optimised to serve cGMP requirements for hygienic applications. The system, designed for use in a GMP regulated environment allows you to choose single-use flow path or conventional stainless steel flow path, whichever is most practical and beneficial for your production strategy and economy.



Our single-use flow path components are carefully selected, qualified and tested for reliability to meet cGMP requirements for hygienic application and USP Class VI requirements for the wetted parts. The single-use flow path is produced in a hygienic environment and packed in a certified Class 10000 (ISO 7) clean room. The entire flow path is gamma irradiated.



Comprehensive product documentation including IQ/OQ, material certificates, and animal origin statements are delivered with the system and single-use flow paths.



System Control



Method Editing

CVS Control Software Chromatography Validated Software

CVS is the control software for chromatography systems. For DisCo systems, CVS is specially developed to have function of switching between conventional stainless steel and disposable flow path.

Key Features

- Designed in accordance with GAMP5 and FDA 21CFR Part 11.
- Real-time control of chromatography system.
- With electronic record and signature, makes your operation traceable and secure.
- System can be run both manually and automatically by method editing.
- Warning and alarm setting are available which can effectively protect system and columns from over pressure and air bubbles.
- Report can be generated automatically.

Specifications	Conventional Stainless Steel Flow Path	Disposable Single-use Flow Path
System configuration	3/8" SS316L Tube System	6.4mm i.d. silicon/TPE tubings
Max. Operating Flow Rate	180L/h	
Min. Operating Flow Rate	4L/h	
Number of inlets	6	6
Number of outlets	6	6
Column connection	1	
Level Sensor Bubble trap	1	1
Bubble trap, auto filling	1L	1L
Pump Type	Quattro Flow Diaphragm QF150	
Number of pumps	1	
Pump Head	Stainless Steel	Single-use
Conductivity sensor , post column	1	1
Temperature Sensor (integrated into conductivity sensor)	1	1
Pressure sensor, pre column	1	1
Air Sensor, pre column	1	1
UV Detector, post column	1	1
UV Monitoring	Variable / multiple wavelength, 200-400nm, four wavelength on-line monitoring at the same time	
Flow meter, pre column	1	1
pH Sensor, post column	1	1
Max. Operating Pressure	6 bars(g)	4 bars (g)
Ambient humidity range	5%-95%	
Ambient temperature range	2-60 °C	
Process temperature range (incl CIP)	2-85 °C	2-65 °C
Control Operating system and Software	Windows™ 7 32-bit factory installed CVS Software .with audit trail.	
System dimensions, W x L x H	880 x 1500 x 1722mm	
Weight	440 kg	
Cabinet Protection	IP 54(NEMA 4x)	
Power supply system	220V-AC-2.2kW	

Lisure Science (Suzhou) Co.,Ltd.
NO.18 Jiangpu RD.
Suzhou Industrial Park, China,215126
Tel:+86-512-69369115 +86-512-69369998

